



Foreign, Commonwealth  
& Development Office

**UKBEAG**

UK Built Environment Advisory Group

**UN HABITAT**  
FOR A BETTER URBAN FUTURE



Evidence-based design

Victoria Delbridge

**IGC**  
International  
Growth Centre

Cities that Work 

## Common biases in decision making

How often do you or others:

- Make decisions based on what others think/decide
- Prefer to maintain the status quo than risk trying something new
- Favour options that confirm prior beliefs
- Choose smaller immediate rewards, rather than larger future rewards
- Choose to avoid losses, rather than seeking gains



## How can using evidence help?



### Measuring the city



Improved targeting and allocation of resources



Forecasting future demands for public services



### Determining the best policy option



Reviewing best practice across other contexts



Conducting a feasibility for the given context



Policy experimentation and evaluation





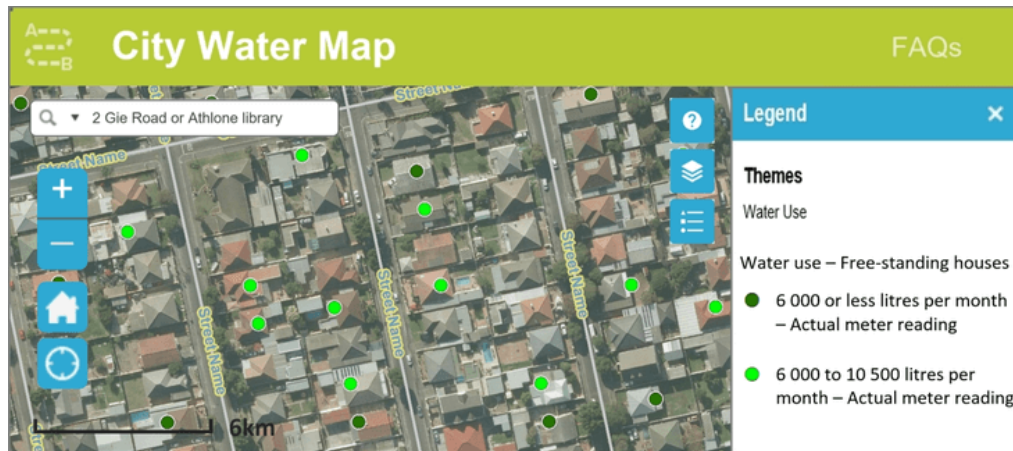
# Measuring the city



## Targeting and allocating water in Cape Town

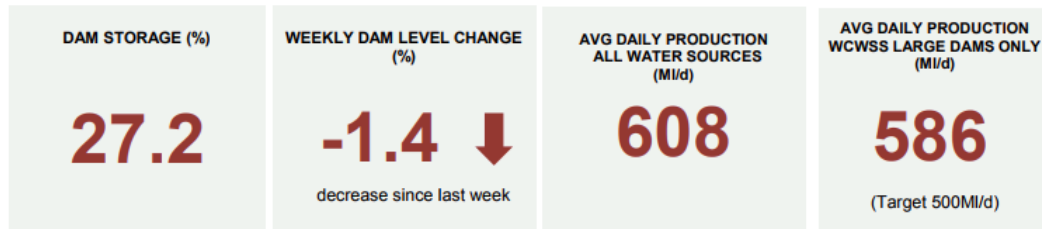
### How do we reduce water consumption?

- **Digitisation** of water data allowed advanced water management and leak detection.
- Data on water usage made **publicly available** for behavior change.

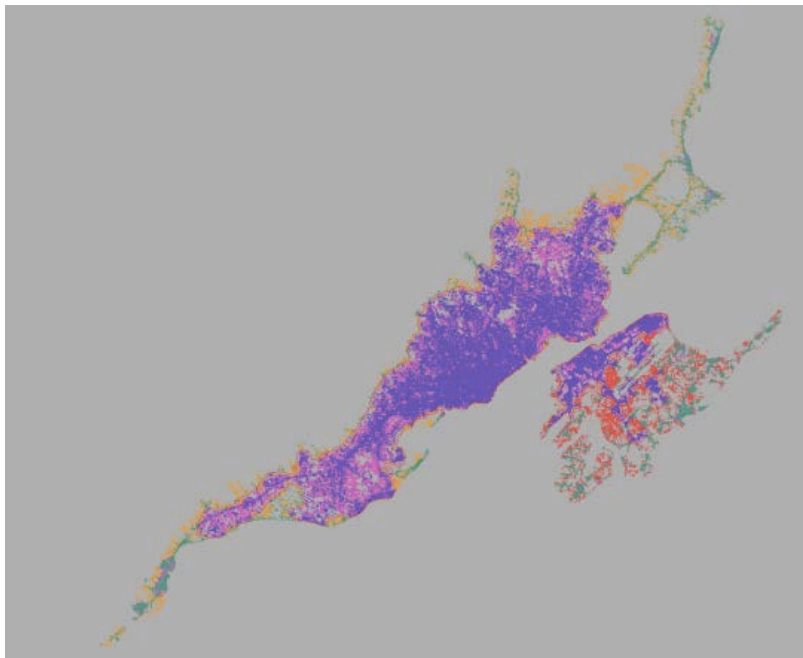


### City of Cape Town: Water Dashboard

22 January 2018



## Forecasting future needs with the Atlas of Urban Expansion



### Where and how is urban expansion taking place in Cebu?

- Use of satellite imagery and analysis to show infill (pink), extension (yellow), leapfrog (red) and inclusion (green)
- Past trends to forecast future infrastructure and service delivery

Source: [http://atlasofurbanexpansion.org/cities/view/Cebu\\_City](http://atlasofurbanexpansion.org/cities/view/Cebu_City)





# Determining the best policy option

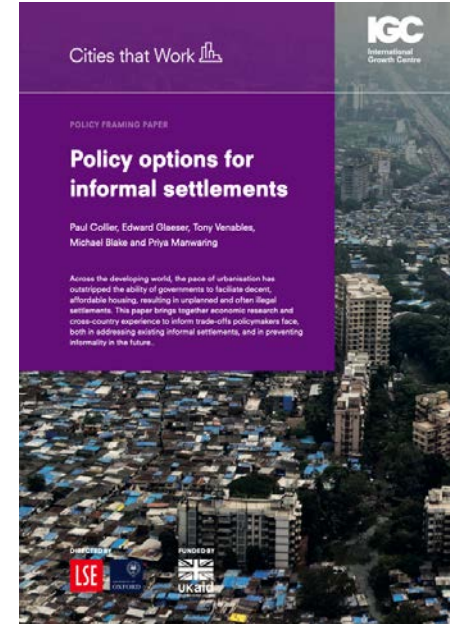


## Reviewing the stock of evidence

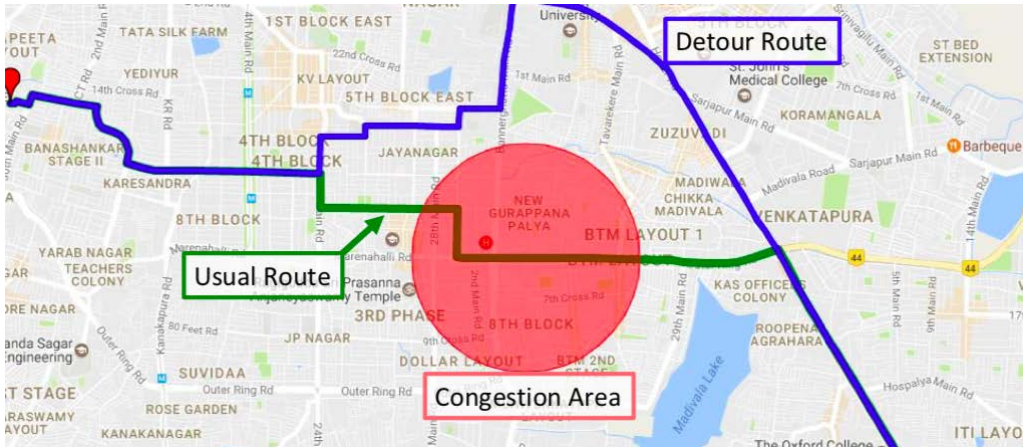
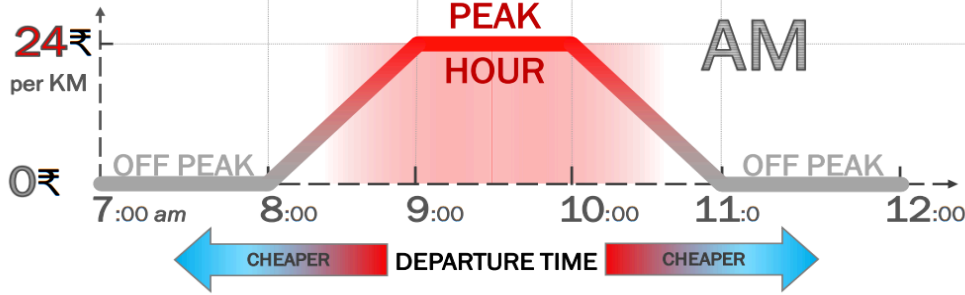
The screenshot shows the 'GLOBAL FUTURE CITIES Programme' website. The navigation menu includes PROGRAMME, CITIES, KNOWLEDGE, and COMMUNITY. The KNOWLEDGE dropdown menu is open, listing: At a Glance, Themes, SDG Tool, Resources, Capacity Development, and Best Practices. The main content area displays a grid of evidence items:

- Public space site-specific assessment** (Tool & Guide)
- City-wide Public Space Assessment: Technical Guide** (Tool & Guide)
- City-Wide Public Space Strategies: A Guidebook for City Leaders** (Tool & Guide)
- International Guidelines on Urban and Territorial Planning** (Tool & Guide)
- UN Secretary-General's Policy Brief on COVID-19 in an Urban World** (Brief)
- Reshaped Podcast Series** (Podcasts, Audio)

## What has worked elsewhere in informal settlement upgrading?







Source: Kriendler (2018)

## Experimenting with road congestion pricing in Bangalore

Will congestion pricing change commuter behavior?

- Participants charged either on **departure time** or taking a **detour route**.
- Use of car **GPS devices** and **license plate reading cameras**.
- While people change their behavior, welfare gains from re-allocating trips away from peak times are negligible.

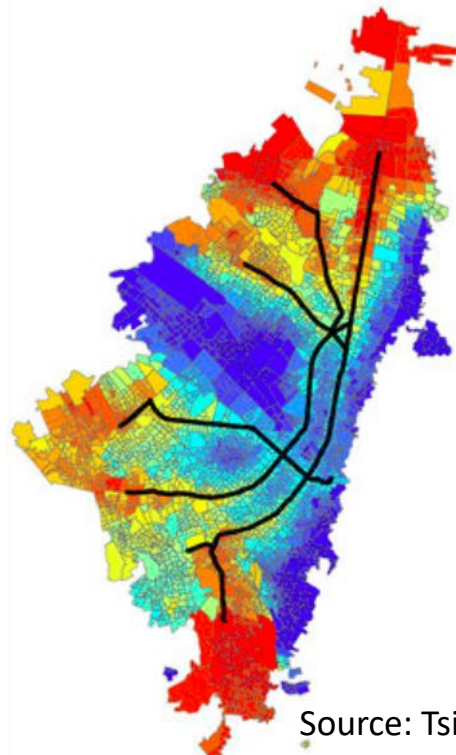
## Evaluating Bogota's TransMilenio

### Bus Rapid Transit (BRT) system

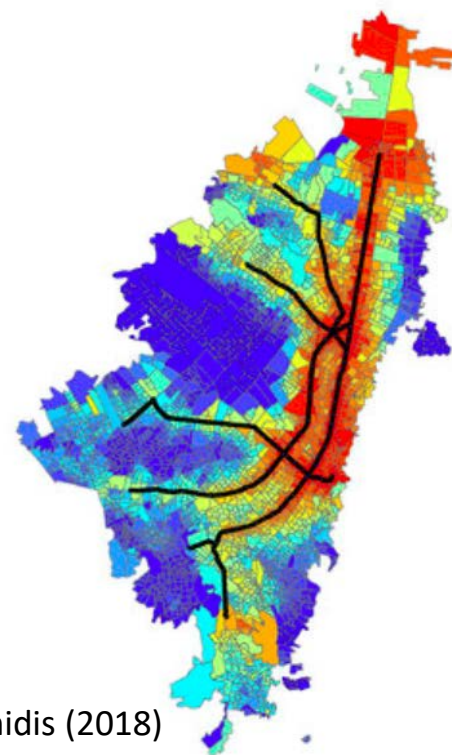
How did the BRT impact location choices of firms and residents?

- Combined **national census data** and **representative city data** on commute times, land markets, and residential and employment locations – before and after the intervention.
- BRT has resulted in **increased employment and city in-migration**; but zoning restrictions have inhibited full benefits.

Residents



Firms



Source: Tsivanidis (2018)



## Caution on evidence-based policy

- Not all evidence is equal
- Collection of data needs to be guided by a specific policy question
- More data is not always preferred to less
- An evidence-based approach requires strong institutions and capacity to implement



# POLL

Thinking about your city, and on a scale to 1 (bad) to 5 (good), to what extent:

- Do the governance arrangements facilitate inter-departmental collaboration?
- Are decisions taken based on robust evidence?
- Do you share data between departments?
- Do you make effective use of data?
- Does data help you to deliver better services outcomes?

