

MAYOR OF LONDON

Integrated strategic planning in London

GLOBAL FUTURE CITIES PROGRAMME - VIETNAM COUNTRY LEVEL EVENT
13 January 2022

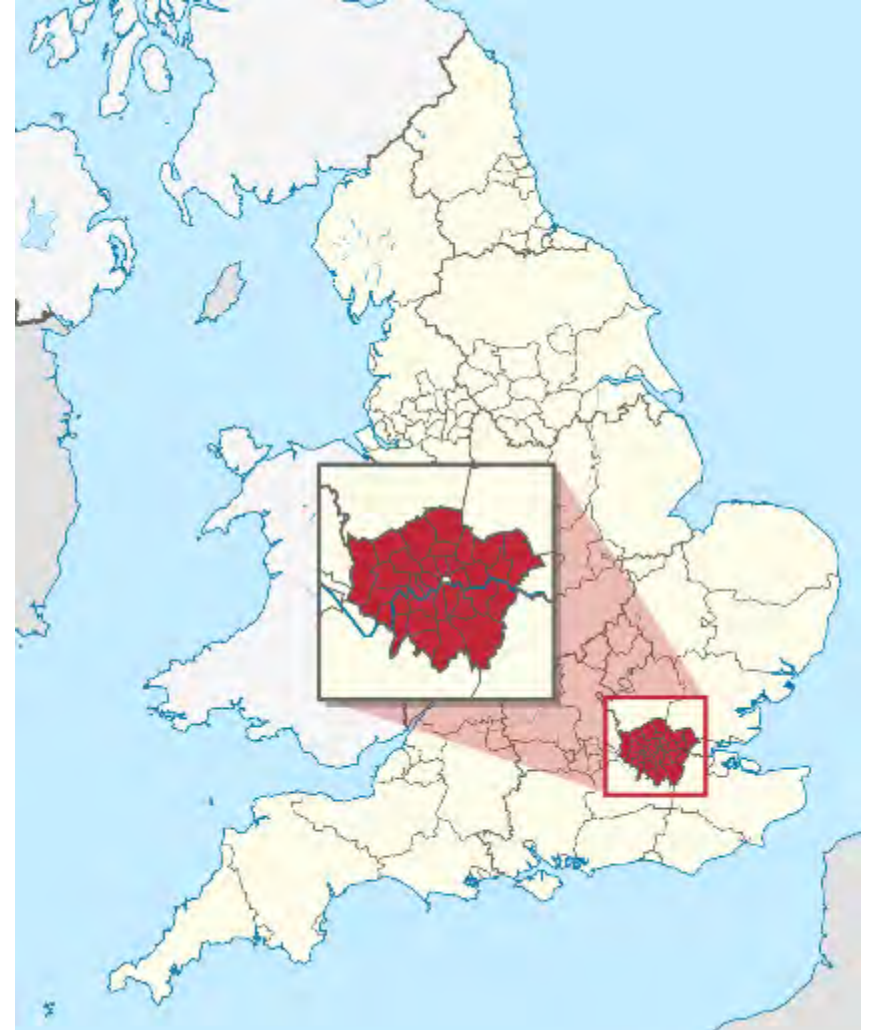
Jörn Peters, Principal Strategic Planner
Ei-Lyn Chia, Principal Urban Designer

CONTENT

- **Greater London Authority**
- **The London Plan**
- **Case Studies**
 - Thames Estuary Growth Corridor
 - Digital Tools
 - Infrastructure Coordination
 - Strategic Drainage Policies
 - Approach to Affordable Housing
 - GLA/TfL Collaboration Project

LONDON GOVERNANCE

- National Government
- Greater London Authority
(Mayor, functional bodies, the Assembly)
- Local authorities
- Businesses
- Community and voluntary sector



LONDON'S MAYORS



**KEN
LIVINGSTONE**
2000 – 2008



**BORIS
JOHNSON**
2008 – 2016



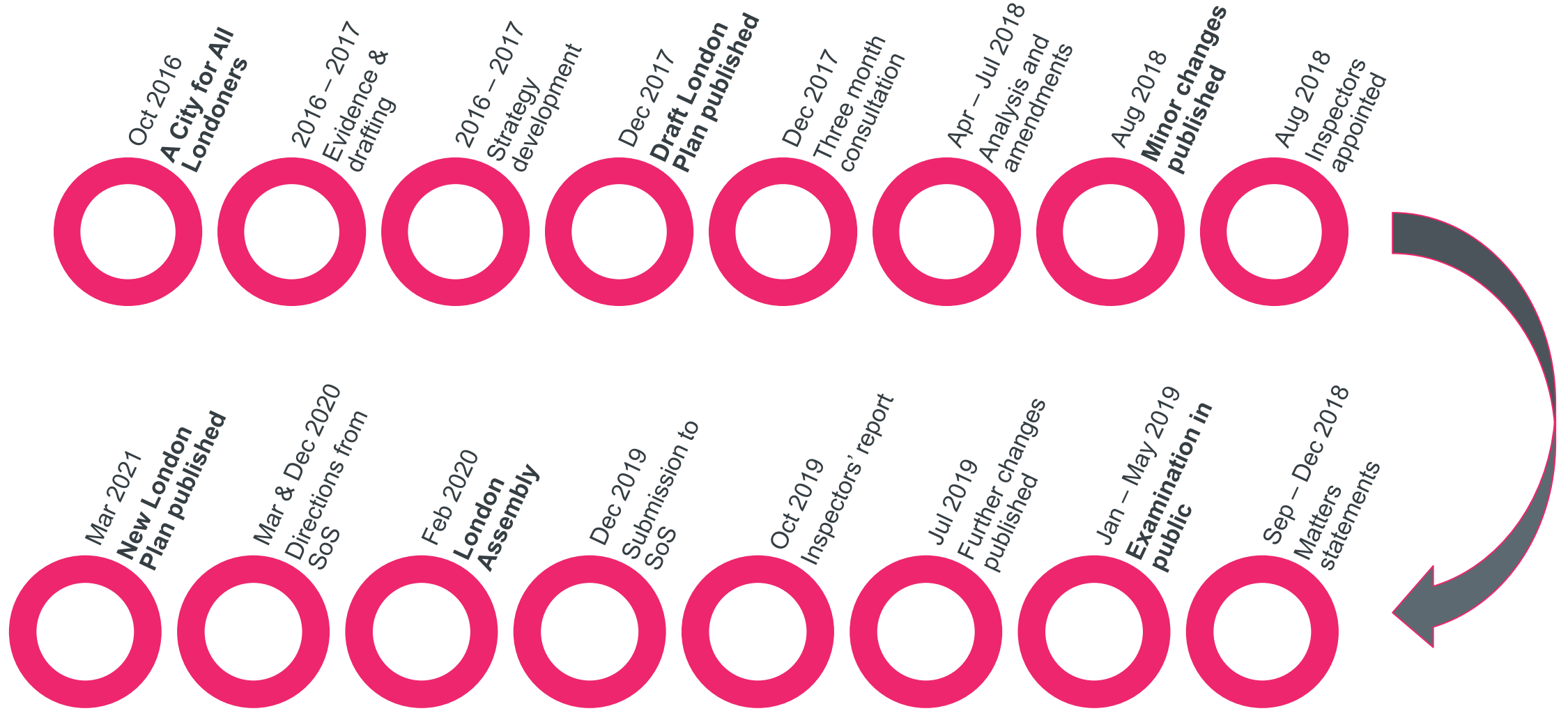
**SADIQ
KHAN**
2016 – 2024

MAYORAL STATUTORY STRATEGIES

- **The London Plan**
- London Housing Strategy
- Mayor's Transport Strategy
- Economic Development Strategy
- London Environment Strategy
- Health Inequalities Strategy
- Cultural Strategy

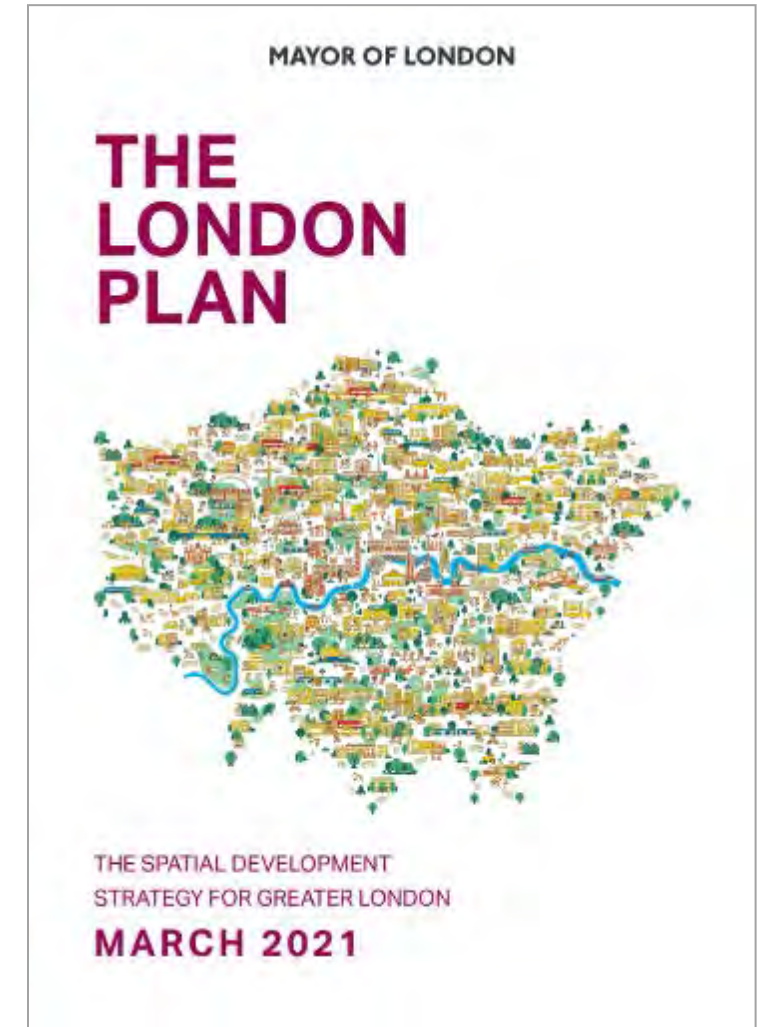


LONDON PLAN TIMELINE



THE LONDON PLAN 2021

- Strategic plan for the development of London over the next 20-25 years
- Over 100 policies (affordable homes, design etc)
- The Plan sets the standards for many thousands of **planning applications** that are decided annually, which must be decided in accordance with the Plan
- The Plan sets the framework for **Local Plans** which must be in ‘general conformity’ with the London Plan

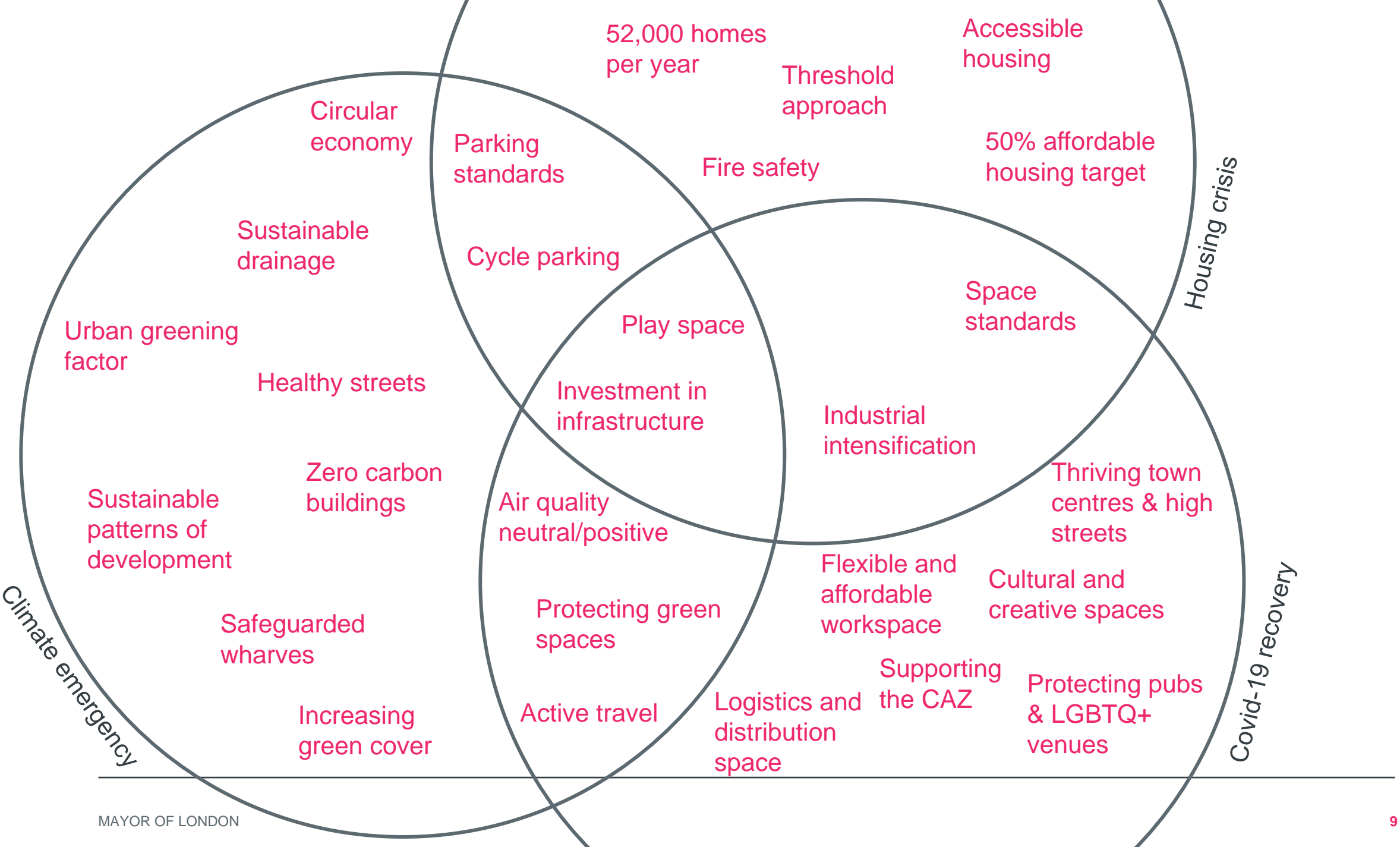


SENSE OF PLACE – SUSTAINABLE TRANSPORT POLICIES



Source: Lucy Saunders

- **Car-free** for residential schemes in inner London, larger town centres and other high public transport accessibility levels (PTAL) areas
- **Cycle parking** for all dwellings
- **Healthy Streets Approach**



CROSS-CUTTING GOOD GROWTH OBJECTIVES

- GG1 Building strong and inclusive communities
- GG2 Making the best use of land
- GG3 Creating a healthy city
- GG4 Delivering the homes Londoners need
- GG5 Growing a good economy
- GG6 Increasing efficiency and resilience



GOOD GROWTH DIRECTORATE

Other GLA Directorates

London Assembly Secretariat

Communities and Skills

Housing and Land

Resources

Strategy and Communications

Wider GLA Group

Transport for London (TfL)

Policing and Crime (MOPAC)

London Fire Commissioner

Mayoral Development Corporations

London and Partners



CONTENT

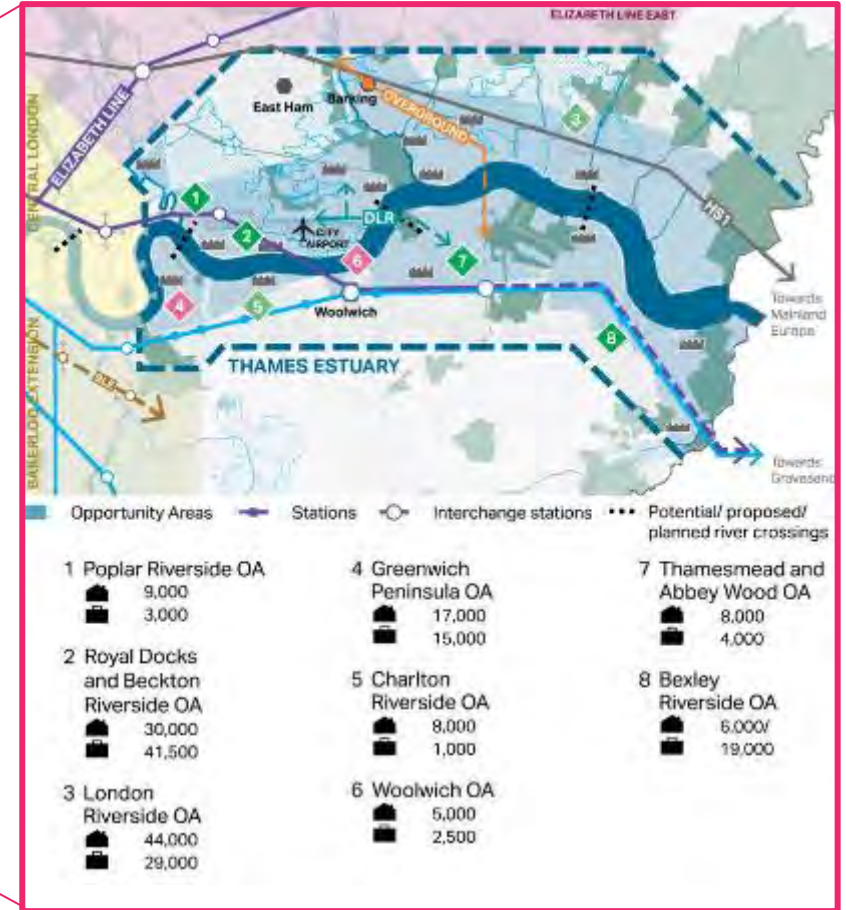
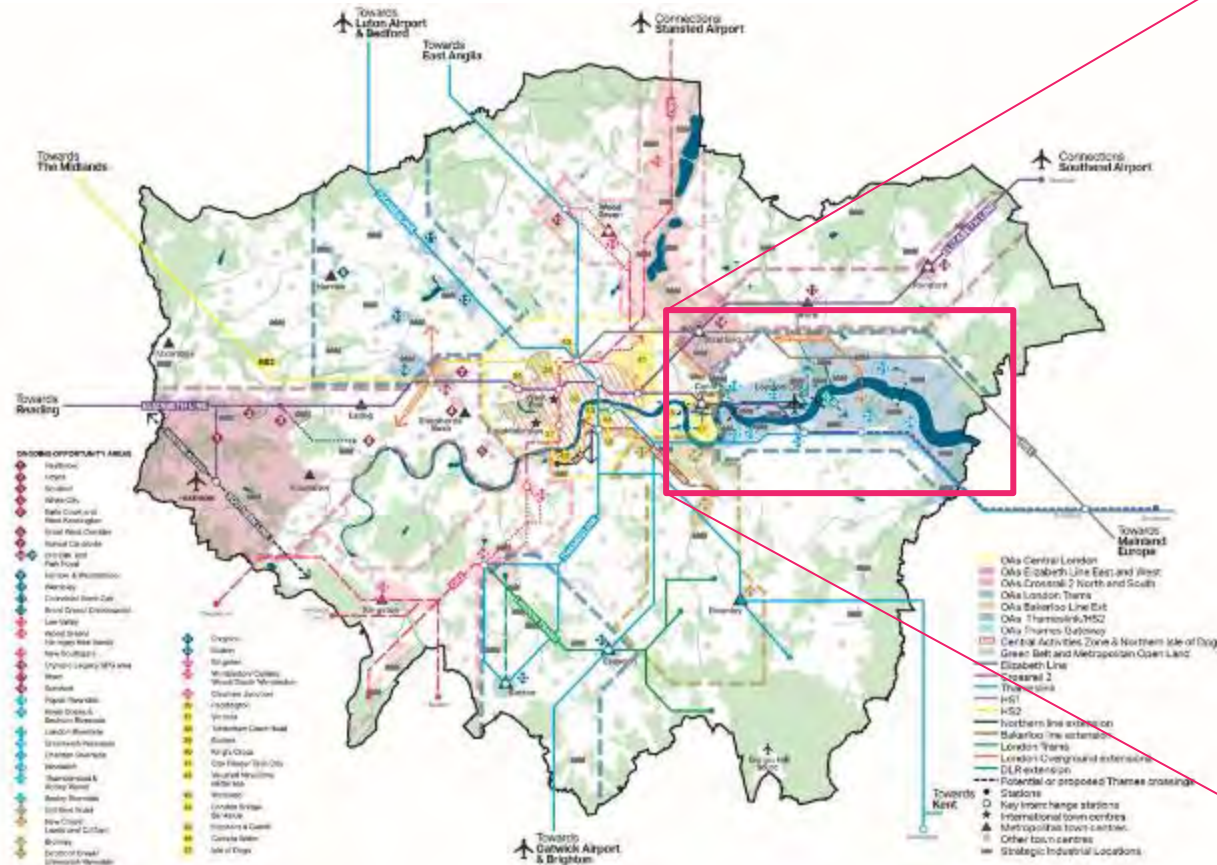
- Greater London Authority
- The London Plan
- **Case Studies**
 - Thames Estuary Growth Corridor
 - Digital Tools
 - Infrastructure Coordination
 - Strategic Drainage Policies
 - Approach to Affordable Housing
 - GLA/TfL Collaboration Project

ACCOMMODATING LONDON'S GROWTH

7 Growth corridors

47 Opportunity Areas

Thames Estuary Growth Corridor



Source: 47 Opportunity Areas identified in London (Fig 2.1, London Plan 2021)

CASE STUDY: ROYAL DOCKS AND THAMESMEAD

- Context : 2 local authorities, GLA, transport authority (TfL), delivery partners and local communities
- Collaboration opportunities:
 - Transport/planning joint case-making
 - Development capacity and new public transport
 - Integrated water management study, green infrastructure study and riverside strategies
- Processes : Joint working days, thematic workshops, senior level coordination panel, steering group meetings

Health and wellbeing

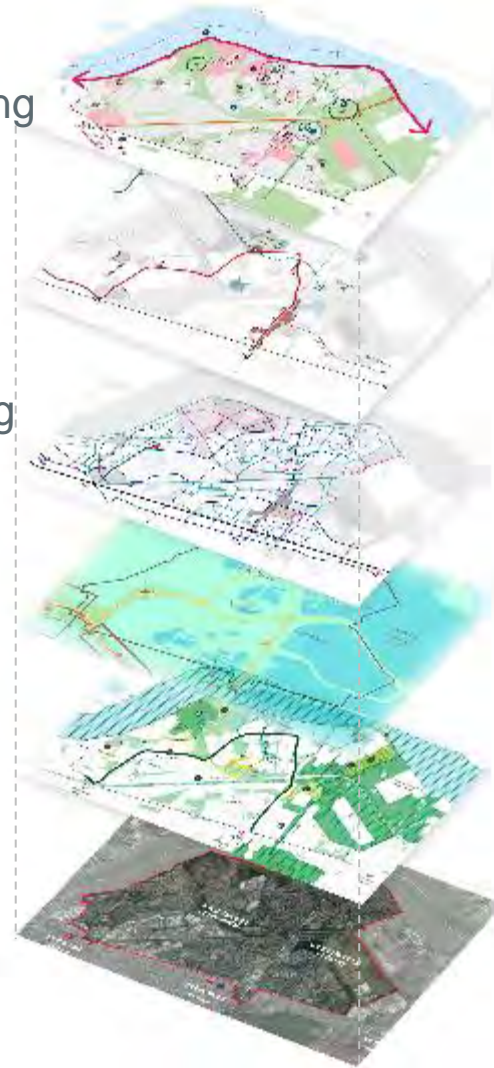
Infrastructure

Walking and cycling

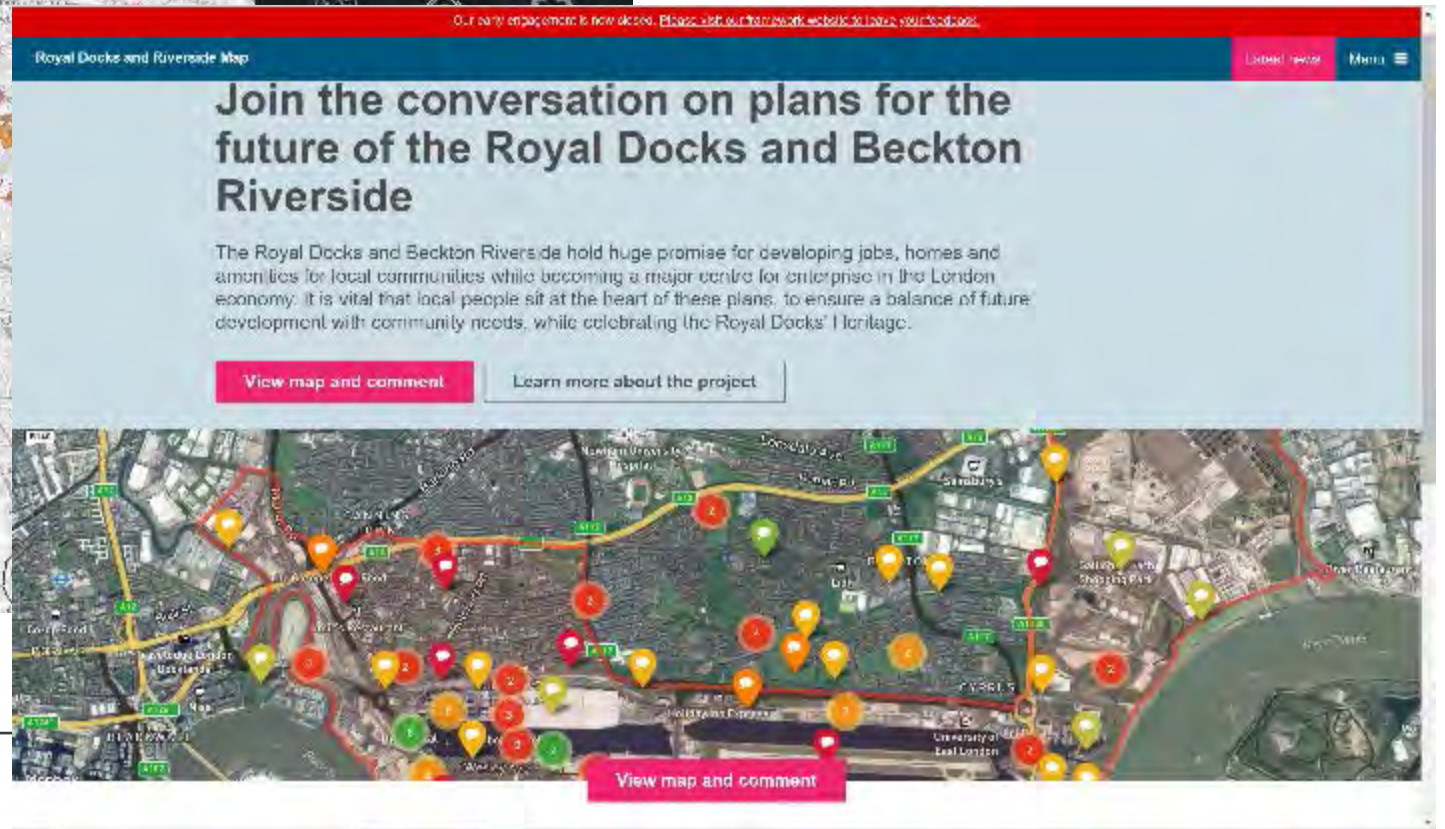
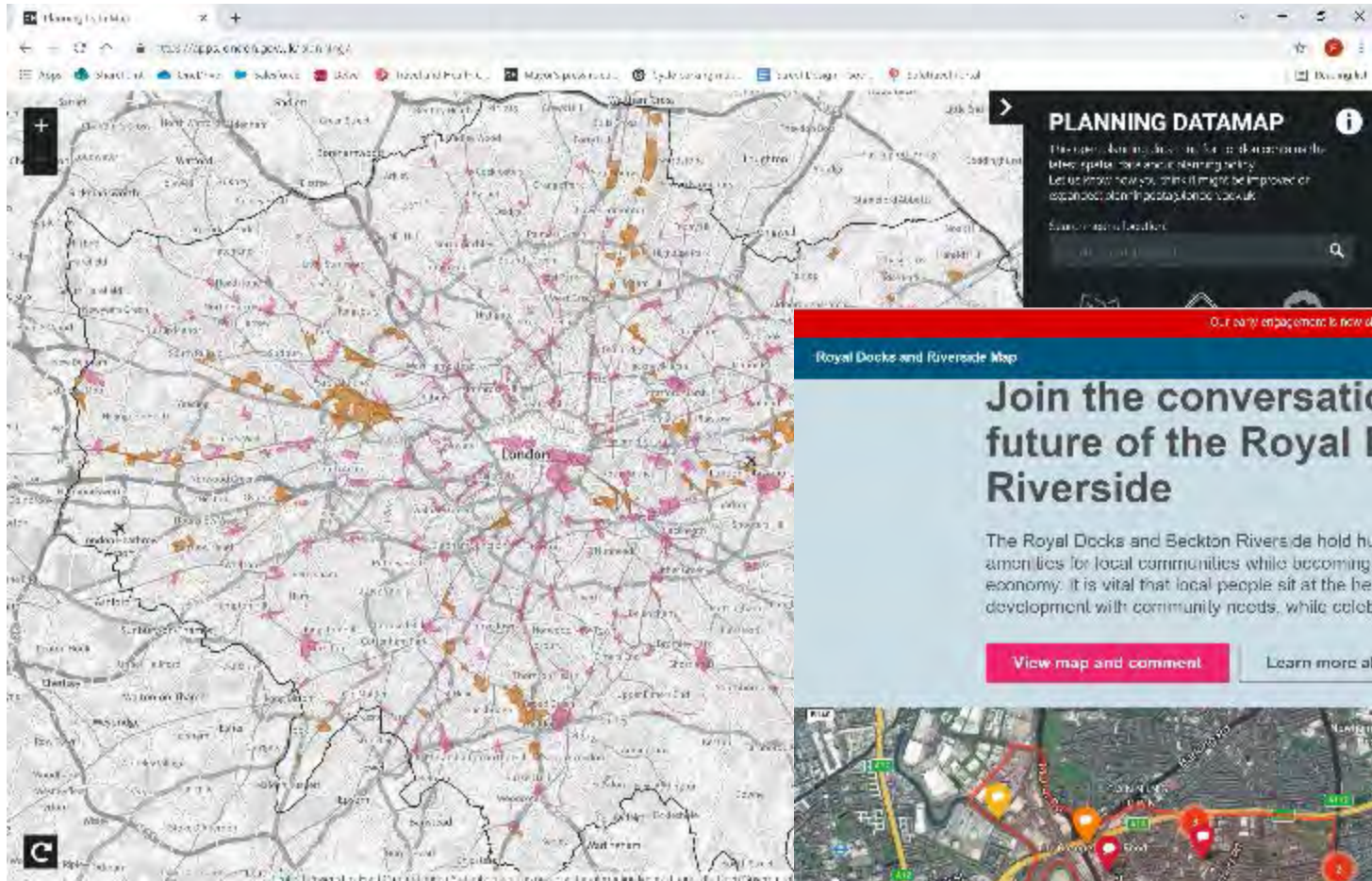
Air quality

Green and blue systems

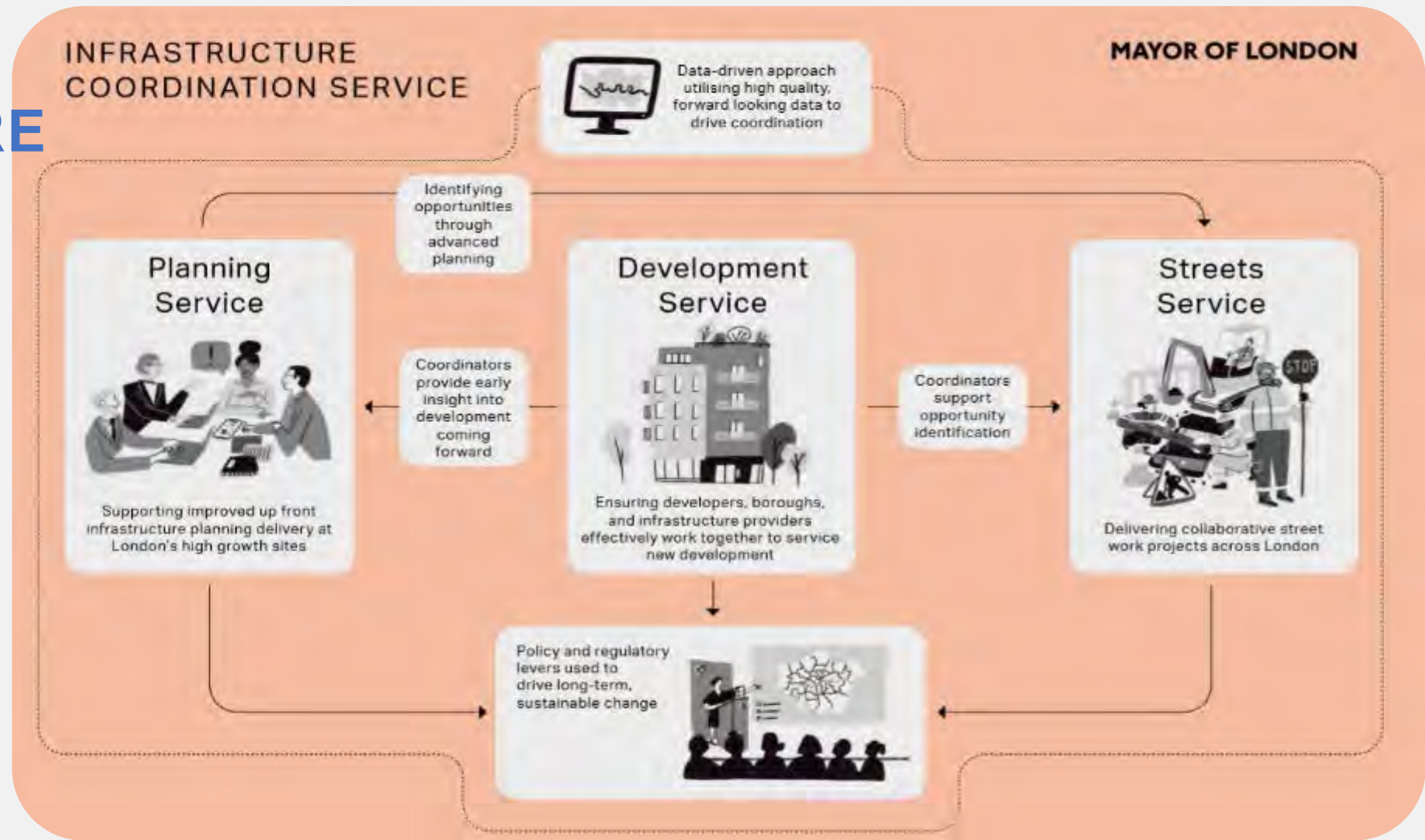
Context, form & function



CASE STUDY: DIGITAL TOOLS



CASE STUDY: INFRASTRUCTURE COORDINATION



Outcomes

- Reduced disruption and congestion
- Improved air quality
- Savings for collaborating partners
- Supporting wider economy
- Improved public realm
- Accelerated housing delivery

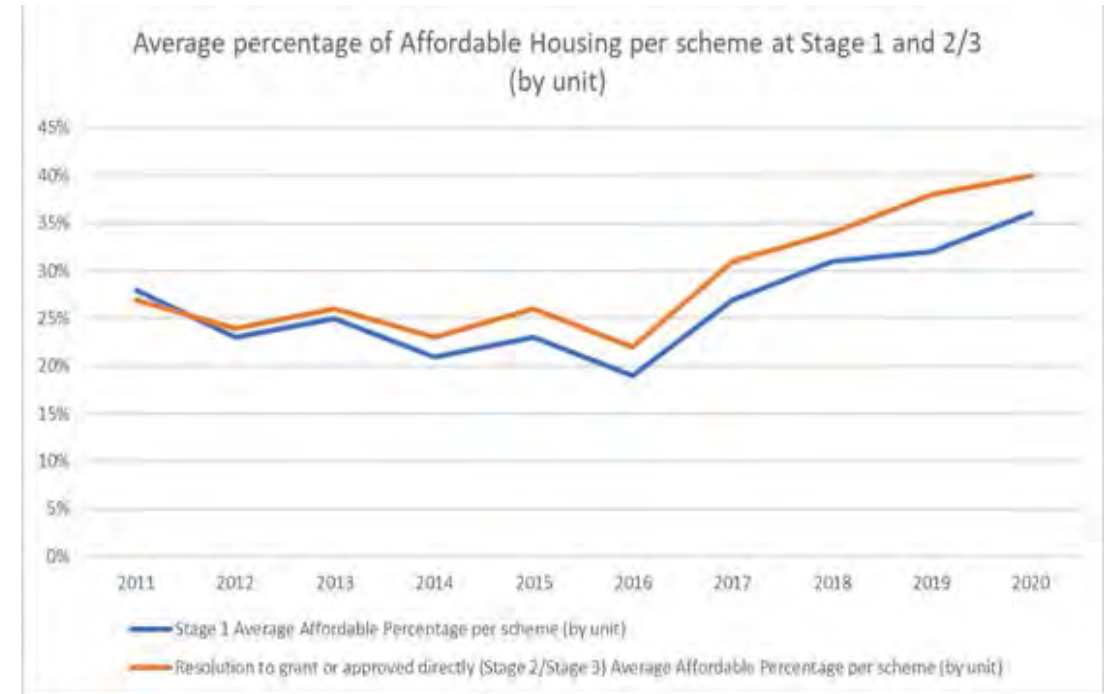
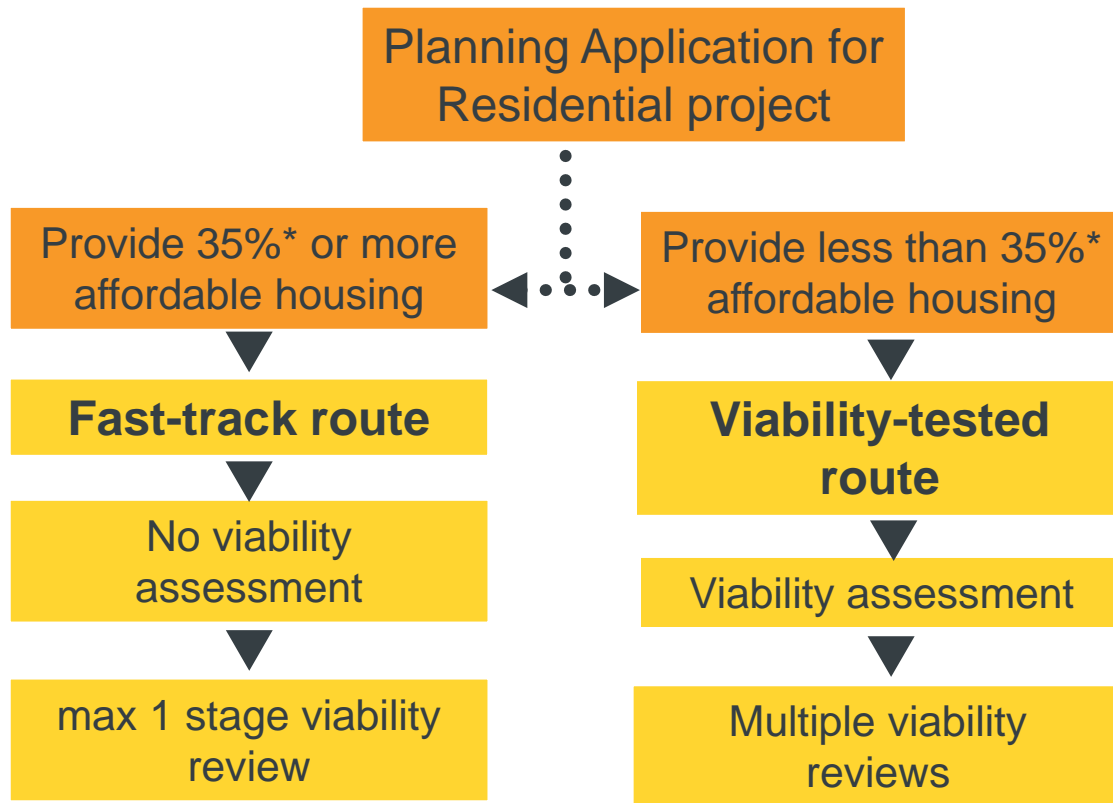
CASE STUDY: STRATEGIC DRAINAGE POLICIES



*Reimagining rainwater in the social housing sector.
Figure 2.10 - Concept for SuDS in social housing*

- Well-established 'drainage hierarchy' within London Plan
- Requiring the provision of drainage data as part of significant development proposals
- Sustainable Drainage Action Plan including guidance and good practice
- Technical staff resource to provide advice for all London boroughs
- Working with national agency responsible for flood risk
- Drainage modelling to assess surface water flood risk of essential infrastructure/services

CASE STUDY: APPROACH TO AFFORDABLE HOUSING



CASE STUDY: GLA/TFL COLLABORATION

Indicative Actions

- Organisation charts
- Induction pack & training for new staff
- Knowledge sharing forum and showcasing best practice
- Regular inter-team meetings and site visits
- Sharing of internal systems (file sharing)
- Bring together our online presence
- Co-location
- Simplifying the 'front door' for our partners



QUESTIONS

Q1: What might be the benefits of integrated planning?

- A. Efficiency savings for the city administration
- B. Greater understanding and ownership of urban interventions across the administration
- C. More scope for collaboratively overcoming difficulties
- D. More opportunities for support from external partners on urban interventions
- E. Better acceptance of urban interventions by citizens
- F. Other [specify]

Q2: What are the barriers to more effective integrated planning and collaboration?

- A. Lack of suitable technology (e.g. information sharing methods)
- B. Lack of incentives for collaborative working
- C. Complex inter-departmental/organisational processes
- D. Limited internal/external communication
- E. Others [specify]

Q3: How might we begin to break down these barriers and facilitate collaboration? [free text/word cloud]

Q4: How could we facilitate and strengthen the delivery of spatial public benefits through integrated planning? [free text/word cloud]